

# YODOCK Metropolitan

## Model 2001M-B

*"The Strongest, Most Versatile  
Water-Ballasted Product In The World"*

### FEATURES INCLUDE:

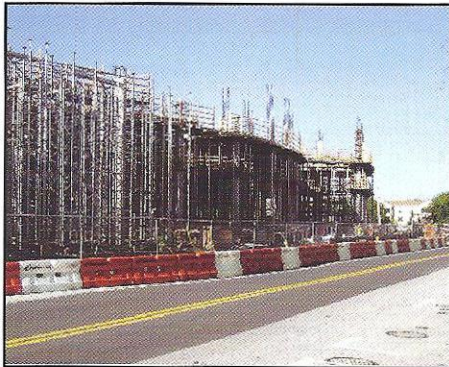
- **Light Weight – Manual Installation** - eliminates the need for boom & crane trucks
- **Water or Sand-Ballast Adjustable Weight** - meets most job weight specification
- **Bright Color Options** - Increases decision site distance
- **Stackable** - Efficient transportation and storage
- **Durable Material – Heavy-duty polyethylene** - engineered for rugged strength - 100% recyclable
- **Safe & Effective** – For channeling pedestrians, or low speed traffic
- **Can be accessorized for barrier wall, fencing, and road closures**
- **Forklift Access** – Quick & easy loading/unloading & maneuverability
- **Tie-down Points allow for anchoring to the roadway service**
- **Easy Set Up** – Saves time & money



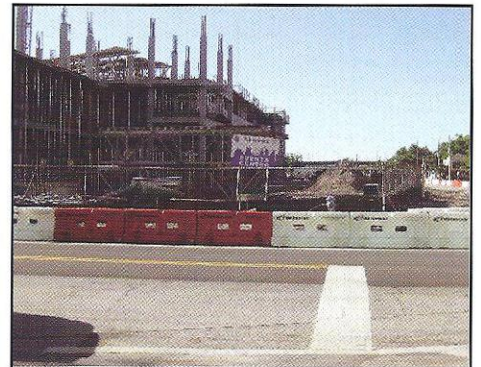
Temporary Fence



Temporary Pedestrian Walkway



Longitudinal Channelizing Barricade



Traffic Barricade

## VERSATILITY – DURABILITY – FUNCTIONALITY

These are the main reasons why Yodock products are the most tested and approved water-ballasted barriers and barricades in the world.

Ask for Documentation on Approvals. Only Yodock offers the most state DOT and federal FHWA NCHRP-350 approvals in the industry

**Yodock**

***The most tested and accepted water-ballasted product in the industry.***



900 Patterson Drive, Bloomsburg, PA 17815 • 1-888-496-3625 • [www.yodock.com](http://www.yodock.com)

# YODOCK Metropolitan Model 2001M-B

*"The Strongest, Most Versatile  
Water-Ballasted Product In The World"*

## Applications Include:

- Construction Zones
- Parking Garages
- Longitudinal Channelizer
- Sign Support
- Temporary Work Zones
- Stadiums & Sporting Events
- Security Mazes
- Parking Lots
- Public Works Projects
- Fence Applications

## Markets Served:

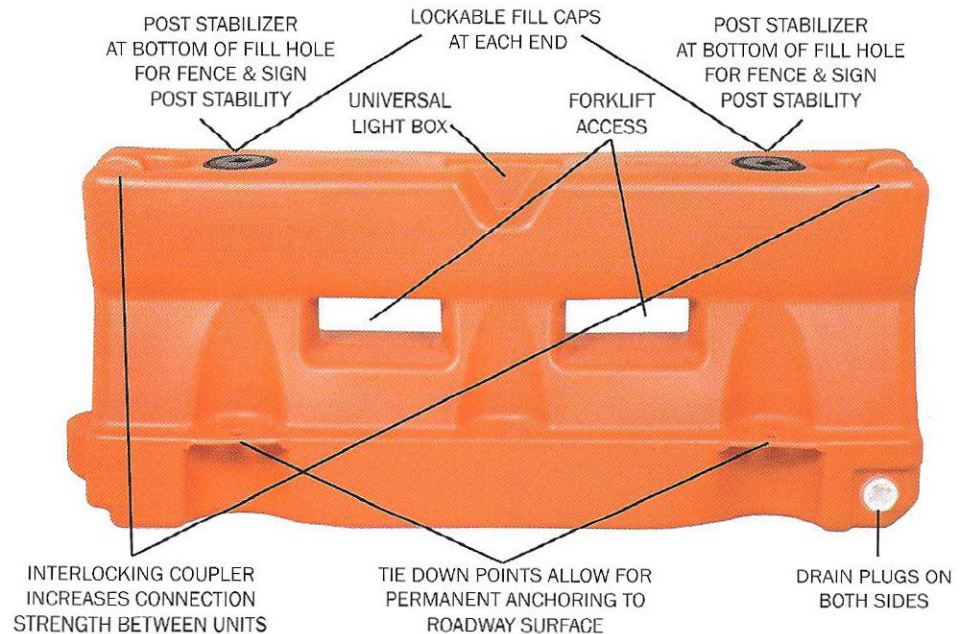
- General Contractors
- Municipal/Public Works
- Special Event/Crowd Control  
(available with fence accessories)
- Playground Safety Apparatus  
(custom colors available)
- Parking Authorities
- Utilities
- Airports

The YODOCK Metropolitan is a patented water-ballasted device used for traffic control and construction projects. It can be used empty or ballasted with water, sand, or other materials. It can be interconnected or spaced apart to clearly delineate the intended path for motorists, pedestrians and workers. Improved features include increased durability, versatility, and functionality.



**72" length, 32" height, 18" base width**

**Weighs 75 lbs empty, 900 lbs filled with water.**



FOR MORE INFORMATION CONTACT:

**Y YODOCK®**

900 Patterson Drive, Bloomsburg, PA 17815  
1-888-496-3625 • [www.yodock.com](http://www.yodock.com)

LOCAL DISTRIBUTOR

PATENTED & PATENTS PENDING

