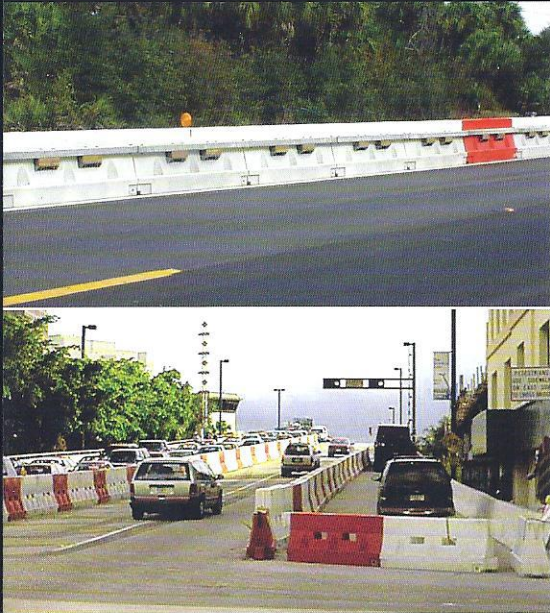


# Traffic Control System

"World's Most Versatile Traffic Control System"



Barrier Wall

Longitudinal Channelizer  
Barricade

## The Yodock™ Traffic Control System

The Yodock™ Traffic Control System is centered around the patented ballastable energy disbursement cell (EDC), known as the 2001 Series. Made of heavy-duty polyethylene, these EDC's can be accessorized to meet a variety of traffic control product categories. This versatility has enabled the system to have earned more Federal Highway Administration acceptances than any other brand in the industry!



The Yodock™ Traffic Control System provides not only superior safety to workers and traffic participants, but also substantial cost savings over other conventional products. The light weight of the Yodock™ system ensures portability, ease of installation, and low transportation costs (units are stackable). Using a versatile product for many applications saves yard space and reduces capital costs. High quality, durable material and superior product design ensure a long lifetime with minimal maintenance.

*Disclaimer: Products must be installed in accordance with The Yodock™ Wall Company, Inc. installation manual. Positive protection requires accessorizing with the 350 Barrier Wall Kit. Product utilized without the 350 Barrier Wall Kit can only be utilized as a Channelizer or Barricade.*

Yodock™ Barricades are capable of being anchored to surface for more permanent installation

Ask for documentation on approvals

**Yodock™**

***The most tested and accepted water ballasted product in the industry***

### TRAFFIC APPLICATIONS:

- **Barrier Wall**
- **Type III Barricade**
- **Longitudinal Channelizer**
- **Sign Support**
- **Temporary Work Zones**
- **Road and Bridge Channelization/Block**
- **Municipal/Public Works**
- **Crowd and Pedestrian Control**

### OTHER APPLICATIONS:

- **Stadiums & Sporting Events**
- **Security Chicane**
- **Explosion Protection**
- **Fence Applications**



**YODOCK™**

# Traffic Control System

"World's Most Versatile Traffic Control System"



## BARRIER WALL

With the addition of the 350 Rail kit, the system is a replacement for concrete barrier wall. The ease of installation and relocations makes it the perfect choice for multiple phase projects and short term construction zones.

- The Model 2001 with 350 Rail kit meets NCHRP 350 TL-3 with only 25 units
- The Model 2001m with 350 Rail kit meets NCHRP 350 TL-2 with only 25 units
- Barriers can be transported and installed individually or in multi unit sections
- One time installation - No need to disassemble for transportation or relocation
- Least amount of lateral deflection of any water ballasted barrier system



Relocation of 60 foot section



Transport & relocate assembled

## TYPE III BARRICADE & SIGN SUPPORT

Accessorized with a Type III kit, the Yodock™ System is crashworthy and more effective at preventing unauthorized access to restricted areas than conventional Type III barricades. Because the system is water ballasted, there is no need for labor intensive sandbags.

- One kit fits both the 2001 & 2001M
- Safe if impacted by large or small vehicles
- High visibility increases decision site distance
- Eliminates the need for sandbags



Road Closure



Sign Support

# Traffic Control System

"World's Most Versatile Traffic Control System"



## LONGITUDINAL CHANNELIZING BARRICADE

The Yodock™ Traffic Control System, when interconnected as a longitudinal channelizing barricade, provides a continuous line of delineation. This helps the motorist navigate through the work zone by clearly identifying the traffic pattern, resulting in an improved traffic flow & increased worker productivity.

- The System can be used empty or ballasted
- Creates easy to follow traffic patterns, reducing motorist confusion
- The System can be interconnected or spaced apart
- All Yodock™ products have this approval



Longitudinal Channelizer



Channelizer

## IN THE FIELD



Crowd Control & Special Events



Airport Construction Projects



Temporary Construction Yards & Building Projects



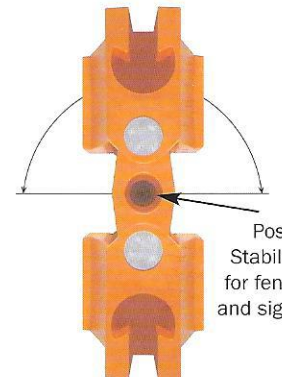
Longitudinal Barrier Wall

## MARKETS SERVED:

- **General Contractor Buildings/Road/Bridge**
- **County Emergency Management**
- **Municipal/Public Works**
- **Police Departments**
- **Fire/Rescue**
- **Military Bases**
- **Airports**
- **Special Event/Crowd Control (available with fence accessories)**
- **Parking Authorities**
- **Utilities**

## OPTIONAL CORNER PIECE

Available in 32" and 46" to compliment the Yodock™ System



Post Stabilizer for fencing and signage

Variable Degree Articulation

# Traffic Control System

"World's Most Versatile Traffic Control System"



## WHY YODOCK™?

\*The only water-ballasted traffic control system that has been physically crash tested to meet the NCHRP 350 requirements for Barrier Wall, Type III Barricade, Temporary Sign Support, Longitudinal Channelizing Barricade, and Channelizer.

- + Most FHWA acceptances in the industry
- + Most rigorously tested ballasted system
- + System configures to multiple applications
- + Independent coupling device \*Model 2001 & 2001M
- + Drain plugs on both sides
- + Barricade light box
- + Internally molded post stabilizers
- = Significant improvement TO THE bottom line!

## THREE SIZES AVAILABLE

### MODEL - 2001

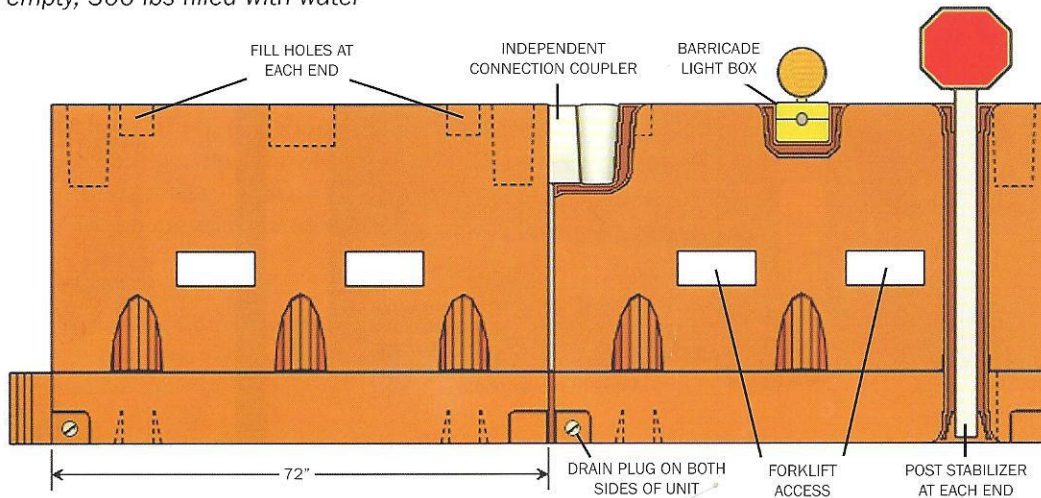
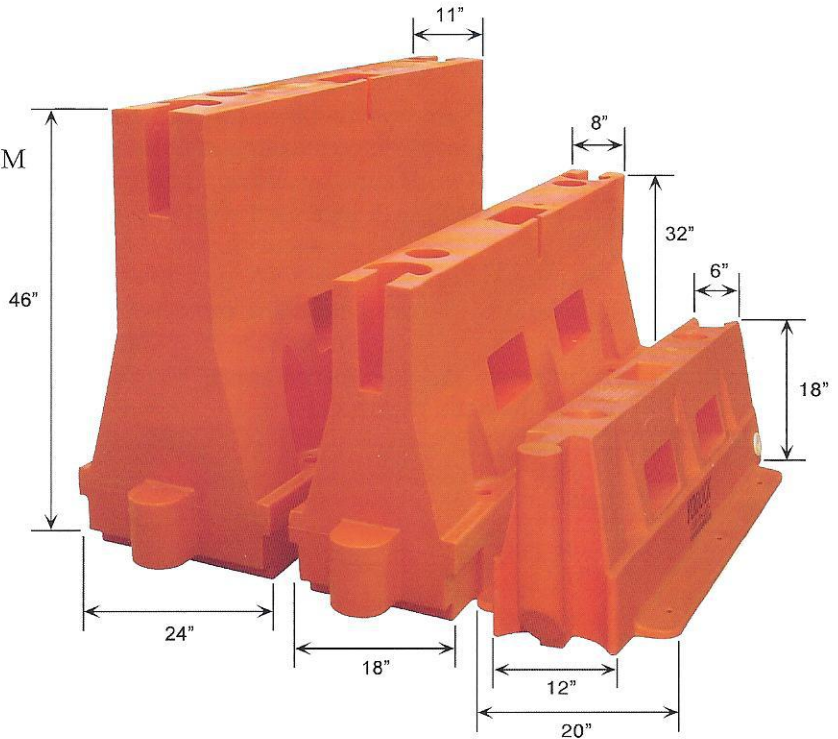
6' Length x 24" Width x 46" Height  
Approx. 130 lbs empty, 1500 lbs filled with water

### MODEL 2001M

6' Length x 18" Width x 32" Height  
Approx. 75 lbs empty, 750 lbs filled with water

### MODEL 2001SL

6' Length x 12" (20" flanges) Width x 18" Height  
Approx. 38 lbs empty, 300 lbs filled with water



FOR MORE INFORMATION CONTACT:



**Y** **YODOCK™**

LOCAL DISTRIBUTOR



PATENTED & PATENTS PENDING